



**Delaware County  
Community College**  
Serving Delaware and Chester Counties

**Find yourself here.**

**Study in the United States:  
A Guide for International Students**





From the moment you arrive on Delaware County Community College's campus, you will feel right at home.

## About Delaware County Community College



Delaware County Community College, founded in 1967, is an accredited, public, two-year college. The College's mission is to offer educational programs and services that are accessible, flexible and comprehensive.

## IT'S A SMART CHOICE.

At Delaware County Community College, you will get the same level of quality instruction offered at many four-year schools but at a much lower cost. You will save money and be better prepared for the next step in your education or career path.

## AVERAGE TUITION RATES (PER ACADEMIC YEAR)

\$25,422



PRIVATE FOUR-YEAR UNIVERSITIES

SAVE MONEY!

\$9,432\*



DELAWARE COUNTY COMMUNITY COLLEGE

Source: Integrated Postsecondary Education Data System for the 2010-11 academic year for Pennsylvania institutions.  
\*Based on 12 credits per semester at the 2012-13 international student rate.

Our programs prepare you to succeed in a changing world.

Wor  
or P



## Find Yourself Here at Delaware County Community College

Whether you are looking to improve your English skills, transfer to a four-year university to complete a bachelor's degree or earn a two-year career degree, Delaware County Community College makes an American education accessible and affordable.

### AN IDEAL LOCATION NEAR PHILADELPHIA

Delaware County Community College is located in Media, Pennsylvania, which is just outside Philadelphia, the fifth largest city in the United States.

#### Media, PA

- Media, Pennsylvania is a comfortable suburban community known as "Everybody's Hometown."
- It is safe and quiet with convenient shopping, theaters, restaurants and apartments.
- Easy-to-use public transportation from Media links you to Philadelphia.
- Media is considered America's First Fair Trade Town.

#### Philadelphia, PA

- Philadelphia is famous for its history and is one of America's important global centers for business, healthcare, education and culture.
- The city offers historical and cultural treasures such as the Liberty Bell and world-class museums, including the Philadelphia Museum of Art, Constitution Center and the Barnes Foundation.
- It is home to four major professional sports leagues.
- There are more than 90 universities and colleges in the area that provide transfer options and create a fun and exciting college atmosphere.

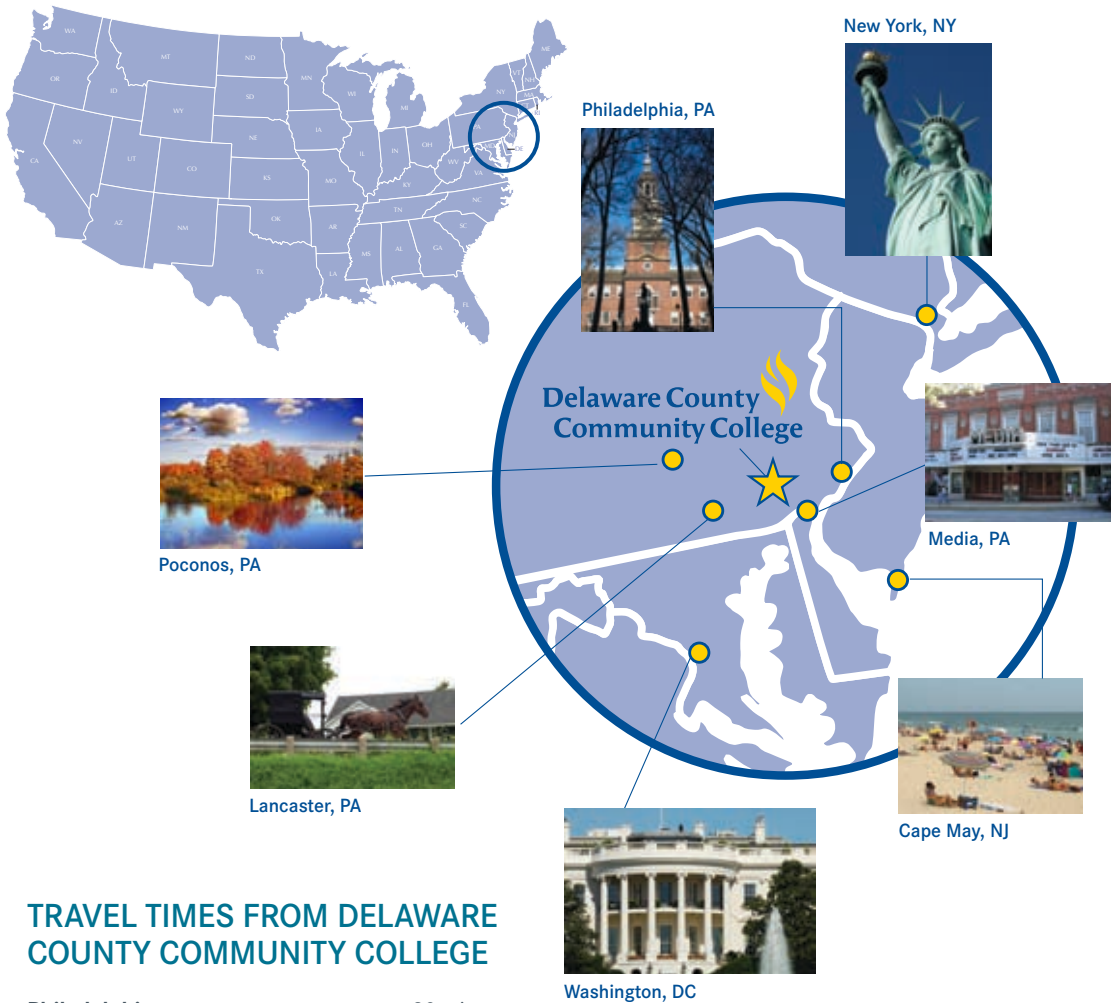
#### Beyond Philadelphia

- Within hours students can explore New York City, Baltimore, Washington, D.C. and Boston, as well as beautiful beaches and mountains.

WELCOME

# DELAWARE COUNTY COMMUNITY COLLEGE AT-A-GLANCE

**Total Students:** ..... 12,500  
**International Students:** ..... 200+  
**Countries Represented:** ..... 50+  
**Average Class Size:** ..... 20  
**Average ESL Class Size:** ..... 15



## TRAVEL TIMES FROM DELAWARE COUNTY COMMUNITY COLLEGE

**Philadelphia** ..... 30 minutes  
**Lancaster** ..... 1 hour  
**Poconos** ..... 2 hours  
**Cape May, NJ** ..... 2 hours  
**New York** ..... 2 hours  
**Washington, DC** ..... 2.5 hours

**For more information, visit: [dccc.edu/inter](http://dccc.edu/inter)**



Whatever **your** goals,  
you can **find yourself** here.



## SEASONAL TEMPERATURES FOR PHILADELPHIA, PENNSYLVANIA

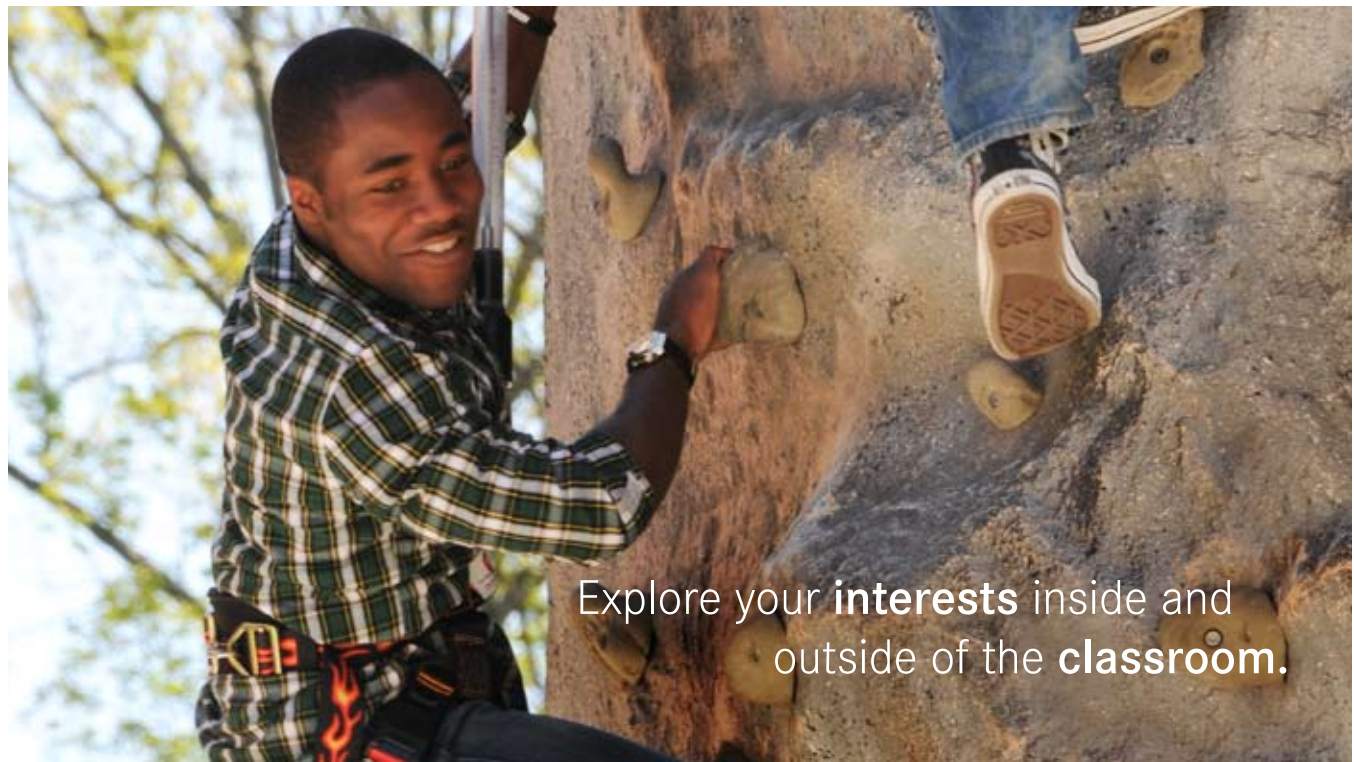
### TEMPERATURES (Fahrenheit/Celsius)

HIGH		LOW
<b>JANUARY</b>		
40°/4°		26°/-3°
<b>FEBRUARY</b>		
44°/7°		28°/-2°
<b>MARCH</b>		
53°/12°		34°/1°
<b>APRIL</b>		
64°/18°		44°/7°
<b>MAY</b>		
74°/23°		54°/12°
<b>JUNE</b>		
83°/28°		64°/18°
<b>JULY</b>		
87°/31°		69°/21°
<b>AUGUST</b>		
85°/29°		68°/20°
<b>SEPTEMBER</b>		
78°/26°		60°/16°
<b>OCTOBER</b>		
67°/19°		48°/9°
<b>NOVEMBER</b>		
56°/13°		39°/4°
<b>DECEMBER</b>		
45°/7°		30°/-1°



LIFE





Explore your **interests** inside and outside of the **classroom**.

## Join a Vibrant Community

A well-rounded education that includes activities, sports and community involvement impresses potential transfer schools, increases your opportunities for transfer scholarships and appeals to future employers. That is why Delaware County Community College offers an array of activities to help enhance your learning experience, bolster confidence and give you a true sense of community.

## MEET NEW FRIENDS

Meet new people from all over the region and the world. There is ample gathering space on campus for students to gather. The first floor of the Science, Technology, Engineering and Mathematics (STEM) Center functions as a student commons with lounges, computers and a coffee bar. There is also a fitness center and aerobics studio that you can use to stay active. The Academic Building has study spaces as well as a café with indoor and outdoor seating.

Students present two plays annually while concerts are offered throughout the year. ►



## LIFE

## JOIN A CLUB

Extracurricular activities, from athletics to academic clubs and student government, bring you together with people from all walks of life—people like you who are transforming their lives and opportunities through the pursuit of new knowledge and skills. See list on right for a sampling of clubs and activities.

## BECOME PART OF A TEAM

Choose from a wide range of competitive inter-collegiate athletics and informal recreational sports and clubs, including baseball, tennis, basketball, golf, soccer and volleyball.



## BUILD ON YOUR SUCCESS

Support services in academic advising, transfer preparation, career counseling and more provide the assistance you need for a comprehensive and fulfilling experience at Delaware County Community College. See list on right for a sampling of some of our student services.

Artwork from students and professionals is showcased in the Art Gallery and throughout the halls of the College.



### Sampling of Student Clubs

Art and Design Club	Hotel Restaurant Management Club
Black Student Union	Literature Club
Business Society	Multicultural Club
Campus Bible Fellowship	Nurses' Club
Chess Club	Paralegal Club
Criminal Justice Club	Performing Arts Club
DCCC Contemporary Band	Political Science Club
Delaware Valley Computer-Aided Design Club	Science Club
Engineering Club	Social Dance Club
Future Financial Professionals	Spanish Club
Gay Straight Alliance	Student Pennsylvania State Education Association
History Club	

### Student Organizations

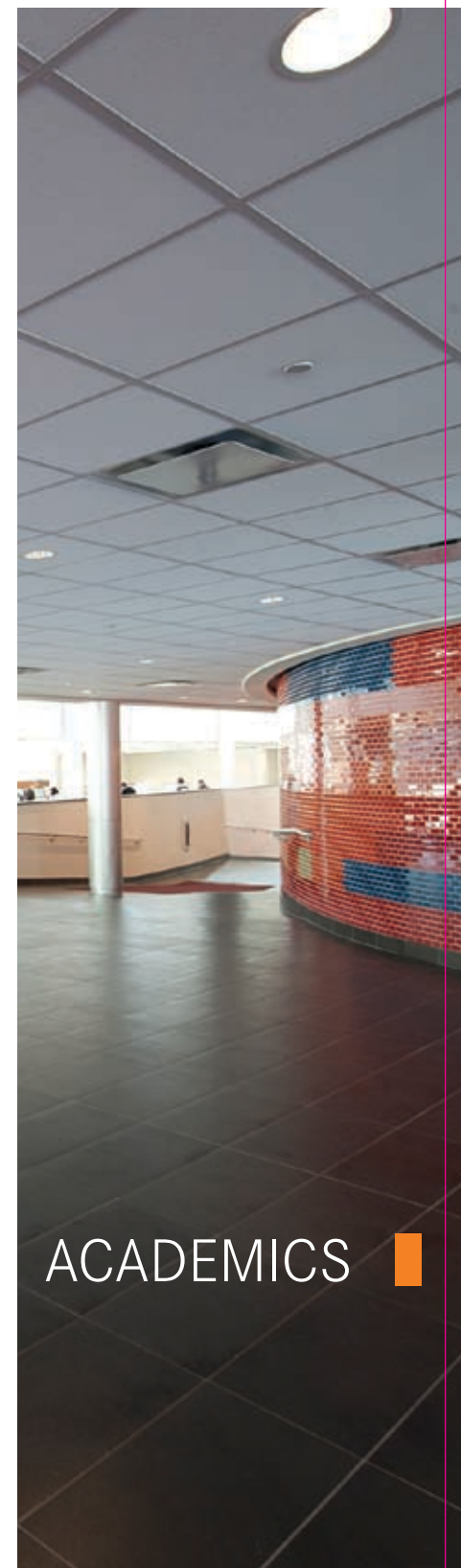
<i>The Communitarian</i>	Student Government Association
Student Newspaper	WDCR Radio Station
<i>Pegasus</i> Literary Magazine	
Phi Theta Kappa Honor Society	

### Athletics

Baseball	Soccer (men's)
Basketball (men's and women's)	Tennis (co-ed)
Golf (co-ed)	Volleyball (women's)

### Student Services

Academic Advising	Library
ACE Program	Math/Science Learning Center
Act 101	New Choices/Career Development Program
Assessment Center	PA CareerLink
Career and Counseling Services	Student Employment Services and Co-op Center
Computing Services	Study Abroad
Continuing Education	Supplemental Instruction
Distance Learning	Transitional Programs
English as a Second Language	Veterans' Services
First Year Experience	Workforce Entry Center
Fitness Center	Writing Center
International Student Services	
Learning Centers (all locations)	







Compared to area four-year colleges & universities, our tuition is the **most affordable.**

### Receive a Top-Quality American Education

At Delaware County Community College, you will receive a top-quality American education at a much lower cost. Plus, our dedicated faculty and expert staff will help you succeed every step of the way.

#### PROGRAMS OF STUDY

- English as a Second Language
- Transfer Degree (2+2)
- Career Degree



Delaware County Community College is recognized as an Achieving the Dream Leader College.

### ENGLISH AS A SECOND LANGUAGE (ESL) PROGRAM

When you arrive at the College, you will take a placement test, and depending on the results, you will be placed into ESL classes, regular academic courses or a combination of both. Our ESL courses are designed to help you learn the language no matter where you are in the process.

#### HIGHLIGHTS

- No TOEFL required; placement test provided
- Intensive English classes
- Four subjects: Grammar, Writing, Reading and Listening/Speaking
- Three levels of instruction: Elementary, Intermediate I and Intermediate II
- Small group tutoring included
- ESL Online Resource Center at [dccc.edu/esl](http://dccc.edu/esl)

#### The ESL Program at Delaware County Community College

ESL Subjects	Elementary	Intermediate I	Intermediate II
Grammar	Level 1	Level 2	Level 3
Writing	Level 1	Level 2	Level 3
Reading/Vocabulary	Level 1	Level 2	Level 3
Listening/Speaking	Level 1	Level 2	Level 3

## ACADEMICS



## PROGRAMS OF STUDY

At Delaware County Community College, you can choose to transfer to a four-year university to complete a bachelor's degree or earn a career degree (associate degree). We also offer many certificate programs for the career-minded student. (See page 10 to learn more about transfer opportunities and earning a bachelor's degree.)

## PROGRAMS AVAILABLE TO INTERNATIONAL STUDENTS\*

### Allied Health, Emergency Services and Nursing

- Emergency Management and Planning (Concentration: Fire Science)
- Health Care Management
- Health Studies
- Medical Assistant

### Business and Computer Information Systems

- Accounting
- Business Administration (Concentrations: Accounting, General, Management, Marketing, Sport Management)
- Business Management
- Computer Applications
- Computer Information Systems
- Computer Programming
- Electronic Commerce
- Game Development
- General Business
- Help Desk/Technical Support
- Hotel and Restaurant Management
- Interactive Multimedia
- Mobile Computing
- Network Engineering
- Paralegal Studies
- Small Business Management
- Web Development

### Communications, Arts and Humanities

- Communication Arts (Concentrations: Communication Studies, Journalism, Theatre)
- General Studies
- Global Studies
- Liberal Arts
- Studio Arts

### Public Services and Social Science

- Administration of Justice
- Behavioral Science (Concentrations: Anthropology, Psychology, Sociology)
- Early Childhood Education
- Education
- Human Service

### Science, Technology, Engineering and Mathematics

- Architectural Technology
- Automated Manufacturing/Robotics Technology
- Computer-Aided Drafting and Design Technology
- Construction Management Technology
- Electronics Technology
- Energy Technology
- Engineering
- Facility Management Technology
- Industrial Systems Technology
- Machine Tool Technology
- Mathematics/Natural Science
- Mechanical Technology
- Nanofabrication Manufacturing Technology
- Science for Health Professions
- Technical Studies

### Workforce Development and Community Education

- Automotive Technology
- Heating, Ventilation, Air Conditioning and Refrigeration

## DEGREES & CERTIFICATES OFFERED

- Associate in Applied Science (A.A.S.)
- Associate of Art (A.A.)
- Associate of Fine Art (A.F.A.)
- Certificate of Competency
- Certificate of Proficiency

\* New programs are added regularly. Program list subject to change.



“ The key piece of advice that I can give to students is to network, network and network. The college experience provides many new relationships—both academic and social— so you should take the time to stay in touch. These relationships can lead to many new opportunities. ”

Esther Castillo  
Liberal Arts Major



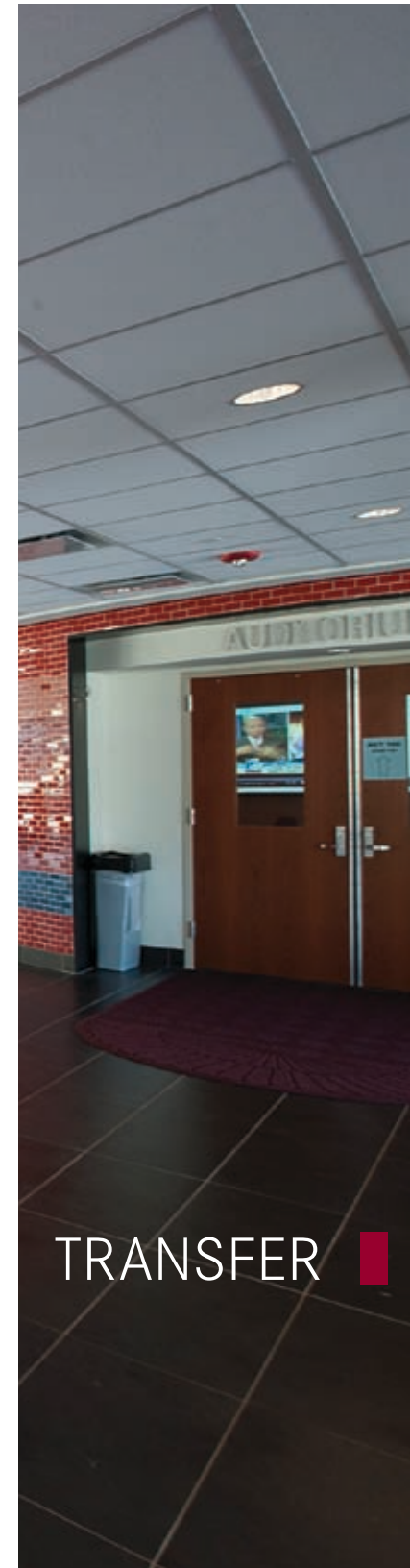
“ Delaware County Community College has given me the most affordable, inspiring, comfortable and challenging environment. ”

Rachel Osayande  
Liberal Arts Major



“ Throughout your education at Delaware County Community College you are exposed to fine minds who not only mentor you, but also challenge you to think in ways you never have before. ”

Isaac Fomevor  
Communication Arts Major







We help you **stay in school,**  
**complete your studies,**  
and **reach your goals.**

## Work Toward a Bachelor's Degree, Transfer to a Top University

In the United States, most bachelor's degree programs demand four years of study. By completing the first two years (an associate degree) at Delaware County Community College, you can save money while benefiting from the College's small class sizes and personal advising.

After completing your associate degree, you can transfer to a four-year college or university. Delaware County Community College has transfer agreements with dozens of Pennsylvania's leading four-year colleges and universities, and credits earned at the College transfer just about anywhere in the United States.

Transfer advisors are available to help make your transfer process smooth and easy. They will work one-on-one with you to answer all of your questions, create an individualized academic plan and make sure you stay on track. To learn more, visit [dccc.edu/transfer](http://dccc.edu/transfer).

## TRANSFER

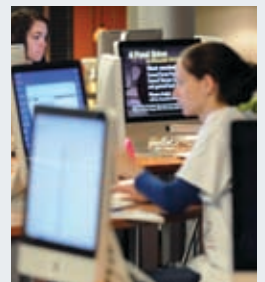
### PATHWAY TO SUCCESS

ESL (English as a Second Language)

+ 2 Years at Delaware County  
Community College

+ 2 Years at a U.S. College  
or University

= **4-Year Bachelor's Degree**





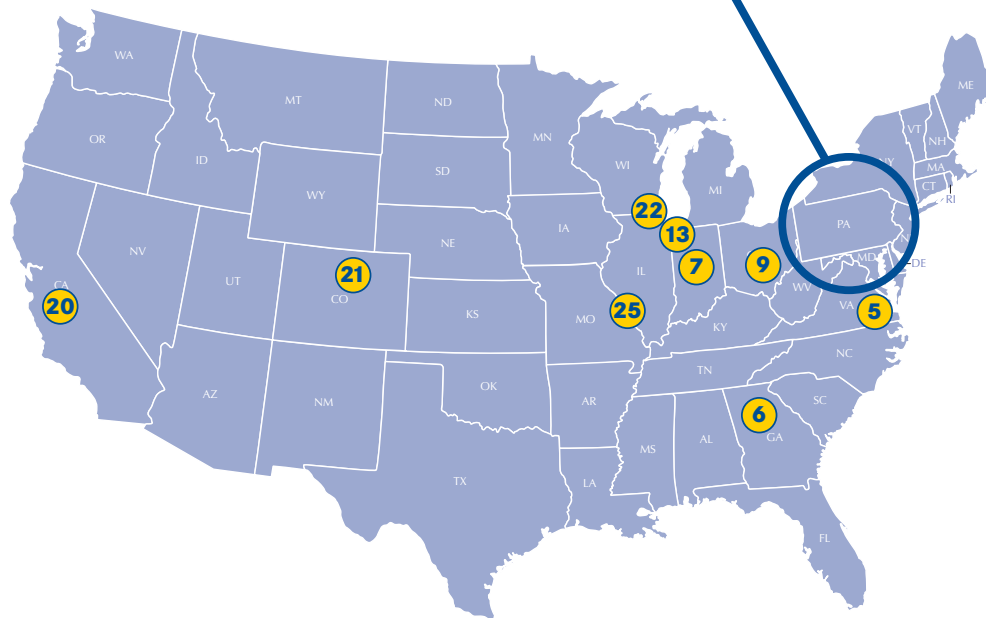
## RECENT TRANSFER UNIVERSITIES

(With rankings from 2012 *U.S. News & World Report*)

Every semester, Delaware County Community College students transfer to top U.S. universities, including:

1. **Arcadia University** (#34 North Region University)\*
2. **Binghamton University, SUNY** (#90)
3. **Drexel University** (#88)\*
4. **Fashion Institute of Technology**
5. **George Washington University** (#50)
6. **Georgia Institute of Technology** (#36)
7. **Indiana University, Bloomington** (#75)
8. **Moore College of Art and Design**
9. **Ohio State University, Columbus** (#55)
10. **Penn State University, Brandywine\***
11. **Penn State University, University Park\*** (#45 tied)
12. **Philadelphia University** (#74 North Region University)\*
13. **Purdue University** (#62)
14. **Rutgers, The State University of New Jersey** (#68)
15. **St. Joseph's University** (#8 North Region University)\*
16. **Stony Brook University, SUNY** (#111)
17. **Temple University** (#9 International Business Program)\*
18. **Thomas Jefferson University\***
19. **The University of the Arts\***
20. **University of California, Davis** (#38)
21. **University of Colorado, Boulder** (#94)
22. **University of Illinois, Urbana-Champaign** (#45 tied)
23. **University of Maryland, College Park** (#55)
24. **University of Pennsylvania** (#5)
25. **Washington University in St. Louis** (#14)
26. **West Chester University** (#82 North Region University)\*
27. **Widener University** (#181)\*
28. **Villanova University** (#1 North Region University)\*

\* Schools that have Transfer Agreements/ Articulations with Delaware County Community College.



The College offers transfer scholarship opportunities and guaranteed admission.



“In the College’s business courses students gain a global perspective while learning how to work in a team, make presentations and network professionally. Many of our students go on to transfer into top business programs around the country, including Drexel and the University of Pennsylvania.”

Linda Durkin  
Associate Professor of Business

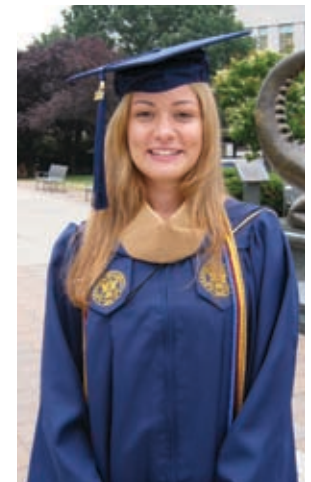


### Hot Transfer Programs

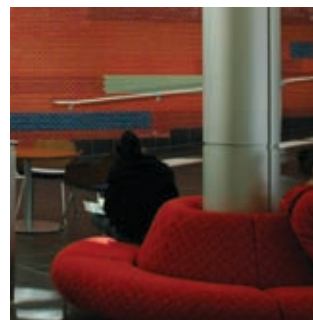
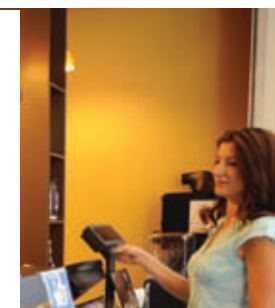
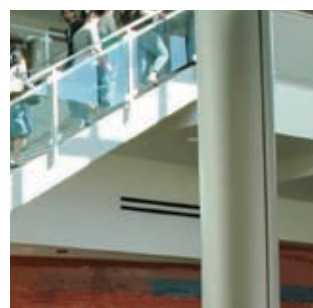
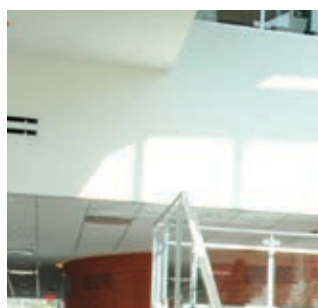
- Business
- Computer Science
- Engineering
- Graphic Design
- Liberal Arts
- Science for Health Professions

“Getting to know other international students and learning from great faculty and staff made me feel well-prepared to transfer to Drexel University. I was awarded a dean’s scholarship and my credits transferred easily towards my bachelor’s degree. Today, I work as a financial analyst for one of the largest U.S. Banks — JP Morgan Chase & Co.”

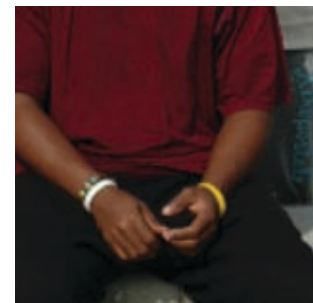
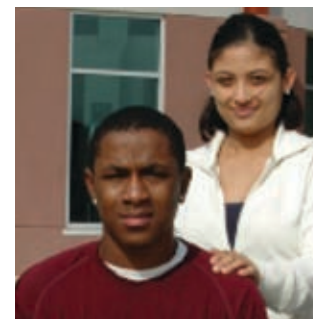
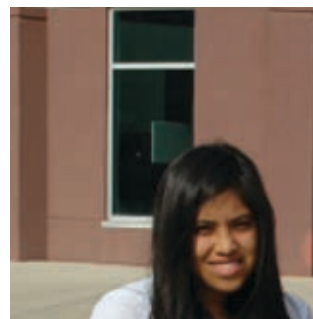
Irena Milovanovic  
Business Administration Major







Find yourself here.







**Find yourself a great education here.**

## APPLY TODAY!

An international student seeking the F-1 student visa to attend Delaware County Community College must take the following steps to obtain the I-20. All documents must be translated into English. Documents submitted become the property of the College and will not be returned to the applicant.

Submit the following original documents, along with a \$25 nonrefundable application fee:

- Completed, signed International Student Application, including the Affidavit of Support.
- Official proof of high school/secondary school completion.
- Official bank statement confirming that funds are available to cover the cost of at least the first year's estimated tuition, fees and living expenses.
- Delaware County Community College transfer release form (if transferring from a U.S. college/university). Find the form here: [dccc.edu/inter-admissions](http://dccc.edu/inter-admissions)

## SEND YOUR MATERIALS TO:

Delaware County Community College Admissions Office  
901 S. Media Line Road, Media, PA 19063-1094, USA

Delaware County Community College is an equal employment and educational opportunity institution conforming to all applicable legislation that prohibits discrimination. The College does not discriminate on the basis of race, color, religion, sex, age, national origin, disability, veteran status, sexual orientation or any other characteristic protected by state or federal laws in its educational programs, activities, admission or employment policies, as required by Title IX of the Educational Amendments of 1972, Section 504 of the Rehabilitation Act of 1973 and other applicable statutes.

## SEMESTER DATES

### FALL

Mid-August to mid-December

### SPRING

Early January to mid-May

### SUMMER

ESL: Late May to early August

## APPLICATION DEADLINES

FALL - July 15

SPRING - November 15

SUMMER ESL - April 15

## FOR MORE INFORMATION

**Web:** [dccc.edu/inter](http://dccc.edu/inter)

**Phone:** 001-610-359-5050

**Email:** [admiss@dccc.edu](mailto:admiss@dccc.edu)

## Highlights of Delaware County Community College

### Features Specifically for International Students

- No TOEFL, SAT or ACT required
- Full-time office for international students
- International student orientation
- Visa and immigration advising
- Homestay program and housing assistance
- English language training

### Diverse Program and Course Selections

- More than 60 associate degrees and 40 certificate programs
- Accelerated degree programs
- Online programs with hundreds of courses and hybrid options
- Study abroad opportunities

### Commitment to Student Success

- New high-tech labs, classrooms and equipment
- Individual attention from professors and one-on-one advising
- 2,500 onsite Mac and PC computers, free wireless Internet access and a laptop loan program
- Free tutoring
- Average class size of 20

### Vibrant Campus Life

- Aerobics studio and fitness center
- Full food service, student café and campus bookstore
- More than 25 clubs, sports teams and organizations
- Visual art exhibitions, music and theater productions

### Post-Degree Opportunities and Assistance

- Career and transfer counseling
- Transfer agreements with more than 40 four-year colleges and universities
- Transfer scholarships and guaranteed admission with select partner schools
- Guaranteed admissions agreements with 16 area colleges and universities

Learn more: [dccc.edu/inter](http://dccc.edu/inter)