

STUDENT RESIDENCE WASHINGTON D.C.

Crystal Plaza Apartments



Crystal Plaza Apartments offers single or shared bedrooms in a 2 bedroom apartment. The property is located in a luxury apartment building in Crystal City, just across the river and a short Metro ride from the center of Washington, DC. Students will have access to the following shared amenities: a 24-hour fitness center with a yoga room; a game room with lounge seating, billiards, shuffle board, foosball & HD TVs; a business center where students can study and surf the web; a seasonal outdoor area with pool, Jacuzzi, BBQ area, and patio area. Each apartment is fully furnished and housekeeping is provided.

Crystal Plaza Apartments have direct access to the Crystal City Metro and Crystal City Shops, which offers a variety of shops, delis and award winning restaurants. Kaplan International is approximately 20-25 minutes by Metro.



Balcony view from a Crystal Plaza Apartment



Location of Kaplan Washington, DC school and Crystal Plaza Apartments

Crystal Plaza Apartments
2111 Jefferson Davis Hwy
Arlington, VA 22202
USA

STUDENT RESIDENCE CRYSTAL PLAZA APARTMENTS

WASHINGTON D.C.



Twin bedroom



Twin bedroom



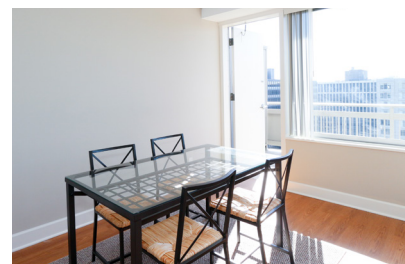
Bathroom



Kitchen



Living area



Dining area

Accommodation details

Type of accommodation

The apartments consist of single or twin accommodation in a 2 bedroom fully furnished apartment with 2 bathrooms. Please note that students may be placed with non-Kaplan students.

Meals

No meals are included but apartments have a fully-equipped kitchen.

Kitchen/cooking facilities

Kitchen is equipped with all major appliances (full sized oven and refrigerator), a microwave, silverware, pots and pans, plates, cup, and glasses.

Rooms

Twin rooms include two twin-size beds, standard bedding, 2 writing desks, and 2 chairs. Single rooms include a queen-size bed, a writing desk, and a chair.

Bathrooms

Single rooms have an en-suite bathroom. Twin rooms have a bathroom shared by the two students in the twin room. Each bathroom has a shower curtain and floor mats.

Laundry

There is laundry facility in the building. The cost per load is \$4.00 (to wash and dry). Students can download an app to receive a notification when their laundry is finished. There is a laundry waiting area with seating and a 50" HD TV.

Utilities

The following utilities are included: electricity, gas, water, cable TV, and Wi-Fi service. Cleaning service (twice per month), and access to laundry facilities are also included. The electrical current is 110/120 volts. Students from some countries will require a transformer or adapter.

Internet and phone

Wireless internet connection is available in the apartment. There is no phone line in the apartments.

Security and keys

The building has secured access and a 24 hour concierge. All guests must sign-in at the front desk. There is also a Resident Assistant who lives on site to provide feasible accommodation of late arrivals. Each student is given 1 key fob and 1 house key.

Bed linen and towels

Linens and towels are provided. The accommodation fees include cleaning (twice per month).

Deposit

Credit card information will be taken upon arrival. Charges will be made if there is damage or loss in the apartment on the student's departure.

Visitors

All guests must sign-in at the front desk and are not allowed to stay overnight.

Student Lounge

There is a student lounge that has a large HD TV. There is complimentary coffee and tea.

Noise and restrictions

Students are required to maintain quiet time from 10:00pm - 7:00am. Students are asked to refrain from making loud noises or playing music loudly.

Availability

Crystal Plaza Apartments is available on demand, all year round. Minimum age is 18. A minimum booking of 2 weeks is required.

Check-in and Check-out

Check-in time is Saturday between 9:00am and 6:00pm. Check-out time is Saturday at 5:00pm. Check-in outside of regular hours may be available upon request.

Different room types are available and the pictures are examples only. Information is subject to change. Published December 2015.