

STUDENT RESIDENCE BOSTON FENWAY / HARVARD SQUARE / BOSTON DOWNTOWN

International Guest House



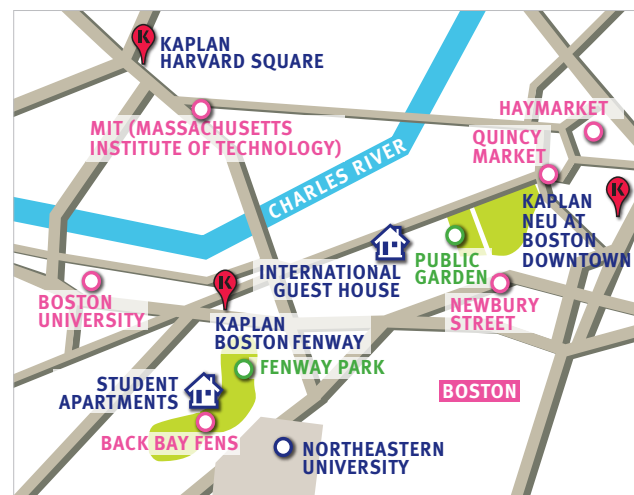
The International Guest House is centrally located in the hot and fashionable Back Bay area. The neighborhood is between Boston's most expensive residential areas, famous for its rows of Victorian brownstone homes and also a popular shopping destination (especially Newbury and Boylston Streets, and the adjacent Prudential Center and Copley Place malls).

The International Guest House offers twin rooms with beds, linens, dressers, desks, air conditioners and free Internet access. There are also laundry facilities available in the basement. The residence option includes 14 buffet-style meals per week.

The Guest House is situated close to Boston Public Library and Copley Square subway station. It takes 15-20 minutes by train to get to the Kaplan International Boston Fenway, 25 minutes by train to get to the Kaplan International Harvard Square school and about 20-25 minutes by train or bus to the Northeastern University at Downtown Boston. This residence is a great place for students looking to meet other international students, explore the city, and have a good time!



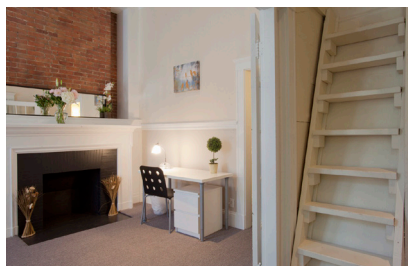
International Guest House entrance



Location of Kaplan schools in Boston and the International Guest House

International Guest House
237 Beacon Street
Boston
MA 02116

STUDENT RESIDENCE INTERNATIONAL GUEST HOUSE BOSTON FENWAY / HARVARD SQUARE/ BOSTON DOWNTOWN



Lounge



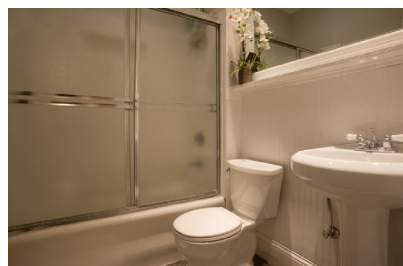
Lobby



Lounge



Twin room



Bathroom



Buffet at communal kitchen

Accommodation details

Type of accommodation

Half board, fully furnished twin rooms with shared bath facilities.

Meals

14 meals (breakfast and dinner) per week are provided. There are also many dining options nearby.

Rooms

Rooms are equipped with beds, linens, towels, dressers, desks and free Internet access.

Student lounge

The residence has a comfortable student common room with a soda machine, a snack machine, couches, and a television - ideal for socializing and practicing English!

Bathrooms

Private or semi-private bathrooms (for 3-4 students). There are 3-4 showers and toilets facilities in communal bathrooms, which are separated by gender.

Utilities

Electricity, gas and water are included in the accommodation fee. The Electrical current is 110/120 volts. Students from some countries will require a transformer or adapter.

Laundry

Coin-operated laundry facilities are available in the basement; \$2.00 fee for washer and \$2.00 fee for dryer.

Internet and phone

Every room has a phone for student use. Local phone calls are free. Students must use a calling card for international calls. Calling cards can be purchased from a vending machine at the front desk. Wireless Internet (Wi-Fi) is available free of charge.

Bed linen and towels

Bed linens and towels will be provided by the residence. Cleaners will wash and change linens once a week. Common areas are cleaned every day; bathrooms are cleaned once or twice a week. Weekly cleaning service is included.

Visitors

Visitors are allowed from 10:00 am - 11:00pm. No overnight guests are permitted and students must stay in their assigned room.

Deposit

There is a \$200 (per person) refundable cash security deposit that will be collected at the residence on arrival and returned upon departure.

Security and keys

Residence has a 24-hour security. One key is provided per student and used for the exterior door and dorm room. A \$50 fee for lost keys is charged.

Noise and restrictions

Students are requested to be considerate of their neighbors and keep noise levels to a minimum, especially after 10:00pm.

Additional Details

There is a \$50 late arrival fee charged directly to students arriving at the International Guest House after 10pm.

Availability

The student residence is available year round. Minimum age is 16.

Check-in and Check-out

Check-in time is Saturday at 2:00pm. Check-out time is Saturday at 11:00am.

Different room types are available and the pictures are examples only. Information is subject to change. Published October 2014. Revised February 2015.