

Kaplan International

# New York - Empire State Building

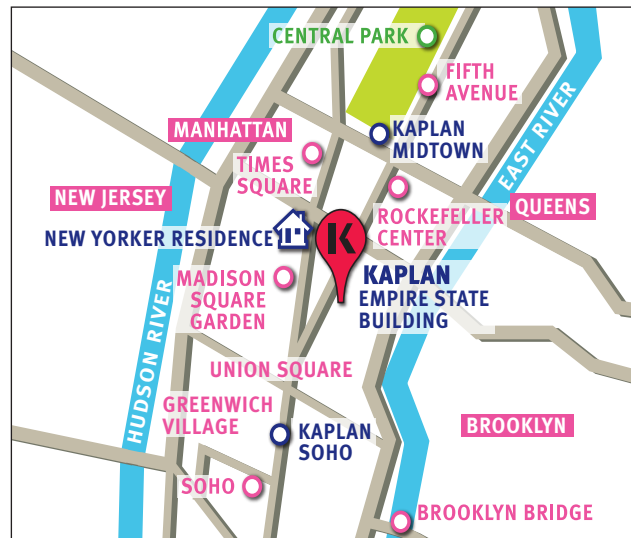


New York City offers a wealth of opportunities to its residents and visitors. With more than 80 world-class museums, 150 on and off-Broadway theaters, 30 concert halls and countless shops, restaurants and bars, it's no wonder New York is one of the world's most popular study-travel destinations. Whatever you like to do, you'll be amazed by the variety of activities you'll find in New York City.

Our Empire State Building center towers above the city on the 63rd floor of this landmark building. Built in the 1930s, the Empire State Building is a part of both New York and US history and today still attracts visitors from around the world. The Empire State Building is just steps away from Macy's at Herald Square and the world's most famous arena, Madison Square Garden. There is access to major subway lines taking you to your accommodation, and every place in the city you'll want to visit.



New York skyline



Kaplan International New York Empire State Building,  
63rd floor  
350 5th Avenue  
New York, NY 10118  
USA

Kaplan International in the USA are accredited by the Accrediting Council for Continuing Education and Training.

Kaplan International is a member of TESOL (Teachers of English to Speakers of Other Languages) and NAESA (Association for International Educators).



**KAPLAN INTERNATIONAL NEW YORK - EMPIRE STATE BUILDING**

## School Facilities

### Classrooms

The Empire State Building Center has 19 classrooms, most with spectacular views of the city. All classrooms feature interactive whiteboards and multimedia capabilities.

### Multimedia and IT center

The center has a computer lab along with a vast collection of learning software for student use. Our lab is an integral part of your studies and a great place to utilize technology to maximize your learning. In addition, the center is equipped with free wireless internet.

### Library

New York City has one of the largest library networks. One of the largest and most famous libraries in the US is located a short walk from the school.

### Student Lounge

There is a student lounge available for student use. The lounge has wireless internet, couches, tables for studying or eating lunch and some of the greatest views of New York. From the student lounge you can see the Brooklyn Bridge, Statue of Liberty, the Financial District, and so much more. Our lounge has vending machines which offer a selection of sodas, hot beverages and snacks.

### Cafeteria

There are many restaurants from fast food and deli to lavish sit down restaurants within 5 minutes of the center. Several are located in the building and may offer a discount for students.

### Sports facilities

Sports such as running, football, soccer and baseball are all available throughout the city.

### Gym facilities

Students can join a local gym located within walking distance or at locations near their residence or homestay.

### Activities/Social Program

While it doesn't take much imagination to keep yourself busy in New York during the time you're not studying, Kaplan provides a varied calendar of activities to fill your days. With workshops, parties, walking tours, museum trips, sporting events, Broadway shows and more, you'll discover parts of New York you didn't even know existed! These activities are led by a member of the Kaplan staff and will help you to meet new people and discover the city.



Student lounge



SMART Board®

## Orientation Information

The first day of your course (orientation) will be held at the Kaplan International New York Midtown school

**Address:** 131 West 56th Street, New York, NY 10019

### Orientation schedule:

- English courses: 9:00 am

Please plan to arrive 15 to 30 minutes early for check in prior the orientation. Your first day will be a Monday unless there is a national holiday on the Monday - in which case your first day will be Tuesday. In the late afternoon you will take a walking tour finishing at the Empire State Building, 63rd Floor.

Your course will begin with an all-day orientation, which will include:

- A welcome talk by the School Director
- A placement test to determine the level of the course you require
- Information about your classes
- Information about the TOEFL® exam
- Information about the school and area
- An overview of school activities and excursions
- A tour of the school
- Completion of forms and collection of any outstanding payments

### Please bring the following with you:

- Passport
- I-94 (if applicable)
- I-20 form (Certificate of Eligibility), if required
- Your address in the USA
- Course payment/voucher, if available
- USD \$40 book deposit
- Proof of health insurance
- All of your Kaplan documents and a pen and paper for notetaking purposes.

At the end of the day you will receive information about, your class schedule, which may be in the morning or the afternoon, your level, and the hours you are to attend class. You will be assigned the most appropriate class for your level of English.

**KAPLAN INTERNATIONAL NEW YORK - EMPIRE STATE BUILDING**

## Local Information

### Transport - buses and trains

The center is located in central New York, so there are many bus stops located nearby. The rail station is only 5 minutes from the center and the subway is also 5 minutes away.

### Banks and Post Office

There are several banks in and around the Empire State Building. Bank staff speak many languages to assist in the most efficient manner.

### Restaurants and cafés

There are many restaurants and cafés located within 5 minutes of the center, some of which give student discounts.

### Shopping

Macy's - the world's largest department store - is located close to the center. We are also on the crossroads of many world-famous designer stores, from Armani to Tiffany's.

### Phones and Internet

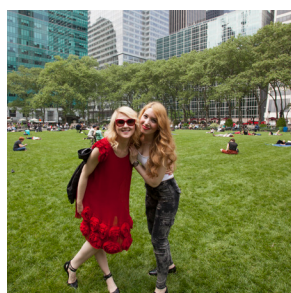
There are many mobile phone providers that can provide long-term or short-term plans to suit your needs. There is free wifi at the school during regular hours and from many local businesses in the area.



View from the roof top of the Empire State building



New York Times Square



Students exploring NYC



Students exploring NYC

### Cost of Living

#### Approximate prices in USD (subject to change)

Sandwich	\$6-\$8
Lunch at a deli (take-away) or low-end restaurant/diner	\$10-\$15
Lunch at a moderate restaurant	\$25-\$30
Hot Dog	\$3
Tea/Coffee	\$3
at a high-end coffee shop	\$4-\$5
Tickets:	
Movie	\$14
Bus/Subway	\$2.50 each way \$2.75 new ticket
Weekly Transit Pass (unlimited-ride MetroCard)	\$30
Monthly Transit Pass (unlimited-ride MetroCard)	\$112

### Sample Activities Schedule

Please note that this is a sample program and activities may change.

#### Week one

Monday	Welcome new students!
Tuesday	Bar night with Kaplan
Wednesday	Visit the Statue of Liberty
Thursday	Watch a Broadway show
Friday	Picnic and bike ride in Central Park
Saturday	Weekend trip to Boston

#### Week two

Monday	Movie at the park
Tuesday	Visit to the Museum of Modern Art
Wednesday	Knicks, Yankees or Rangers game
Thursday	Disco night
Friday	3-day trip to Niagara Falls

**KAPLAN INTERNATIONAL NEW YORK - EMPIRE STATE BUILDING**

## Transfer Information

### Kaplan Transfers

Kaplan can arrange a comfortable and stress-free transfer from any of the three area airports to anywhere in the city you'll be staying - whether you've chosen Kaplan housing or not.

Most students choose to fly in to John F. Kennedy International airport (JFK), but we will also arrange transfers from Fiorello La Guardia Airport (LGA) and Newark International Airport (EWR). Your driver will greet you outside of the baggage claim area in the airport holding a Kaplan sign. All of the details of your transfer will be confirmed and your confirmation number will be provided to you after you've provided us with your flight details. We can also arrange a transfer back to the airport when you have to return home.

### Independent Transfers

If you choose not to use the Kaplan transfer service, the famous New York "Yellow Taxis" are always available. In the airport, you can simply follow the signs pointing you in the direction of "Ground Transportation" to an outdoor waiting area where you'll wait in line for the next available car. The cost for a taxi from JFK is a flat fee to anywhere in New York City, so don't be alarmed if the driver doesn't turn on the meter. From La Guardia and Newark airports, however, the driver should use the meter.

A shuttle and bus service is also available at each airport and specific information about these services is available at the ground transportation waiting area.



New York City



Kaplan International New York Empire State Building