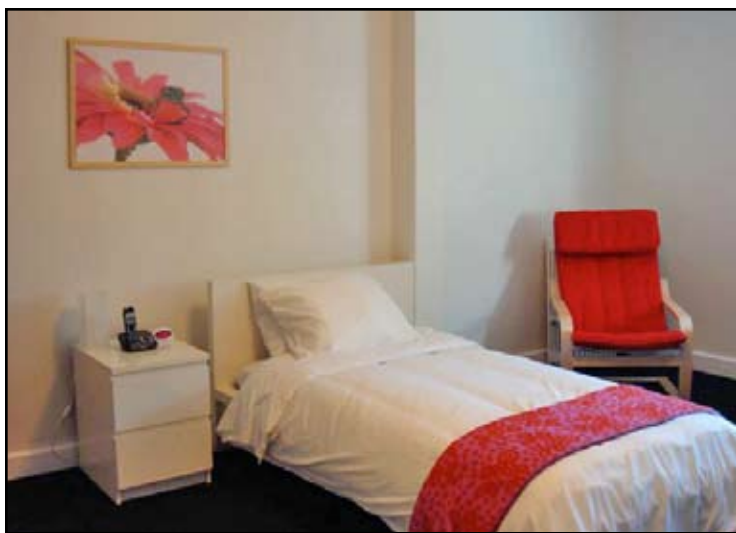


Poppet Hall Residence



Poppet Hall is a historic style residence that offers students a spacious, warm, and quiet environment. Nearby streets are lined with beautiful homes and charming shops, and because Poppet Hall is just minutes away from the Harvard University Law School, the location is popular with both students and families. Just 15 minutes from NESE by public transportation or 25 minutes on foot, Poppet Hall is conveniently located near Harvard Square, where students can enjoy cafes, restaurants, bookstores, bars, and cinemas.



In addition to a bed, dresser, desk, and linens, each room is fully equipped with a telephone, microwave, refrigerator, TV, and DVD player. Poppet Hall has both single and double rooms and the housekeeping staff cleans the common areas and the bedrooms regularly. Poppet Hall offers students a comfortable atmosphere in which they can live, study, and enjoy their time in Boston and at NESE.

tel (617) 864-7170
fax (617) 864-7282
e-mail: reservations@riversidehall.com

<http://www.nese.com>

Riverside Hall, 36 John F. Kennedy St., Cambridge, MA